

Nota applicativa 02/02/2011

## Conditional Storing / Time Controlled Storing

The SRM-3006 has some very convenient memory functions that are all designed for one purpose: to save only the measurement results that are of interest to the user without inflating the quantity of data.

### Conditional Storing

This function is used particularly for monitoring threshold values.

The instrument starts saving data as soon as the measured value exceeds a settable threshold. This threshold and other parameters can be set using the *Conditional Storing* menu.

Possible storing conditions:

- First value exceeding the threshold (value stored when the threshold is exceeded for the first time) or
- All values above the threshold (value stored each time the threshold is exceeded).

A great number of results can be obtained very quickly because of the high measuring speed of the SRM-3006. For this reason, users can select how many results to save:

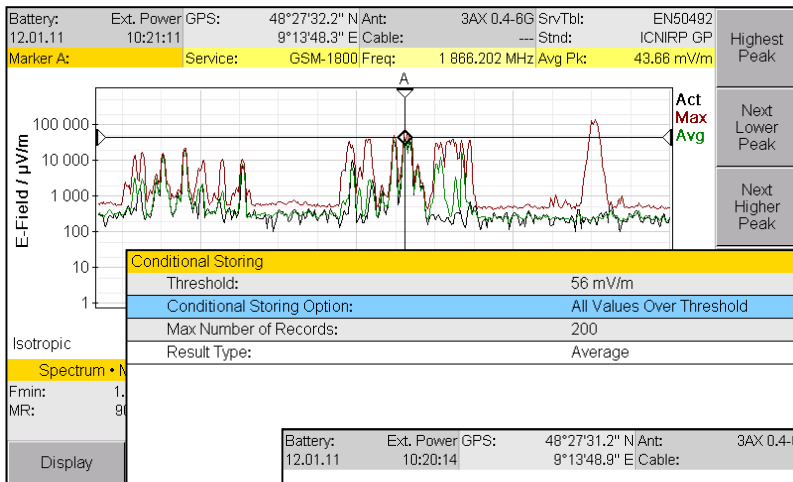
- As many as possible (i.e. until the measured value memory is full) or
- 2, 3, 5, 10, 20, 30, 50 and so on up to 500.

Finally, the user must select the Result Type to which the threshold criterion is to be applied.



Example: Monitoring the GSM1800 band in *Spectrum Analysis* mode.

The average (Avg) values are of interest here. The value of 56 mV/m should not be exceeded. This is monitored using *Conditional Storing*.



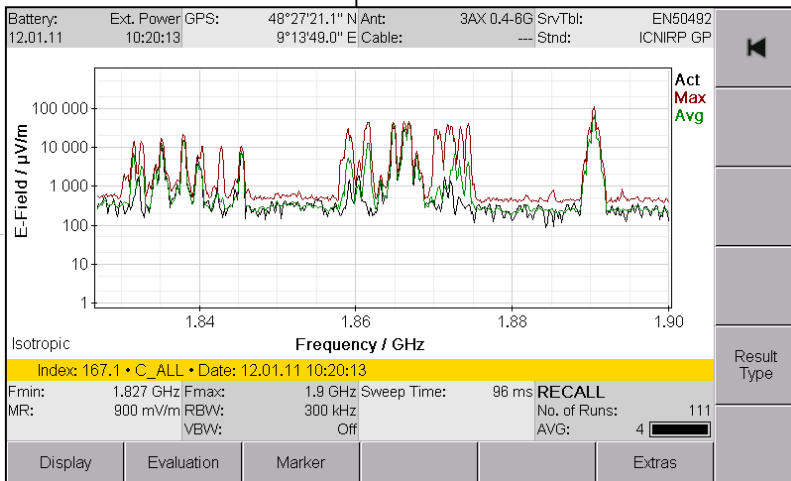
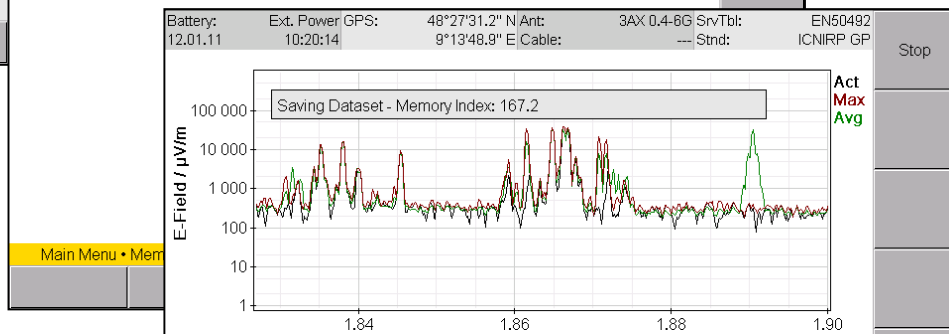
First of all, a measurement is made to obtain an overview. The highest peak seen here for the average values (Avg) is 43.66 mV/m.

Therefore the threshold setting of 56 mV/m makes sense.

After starting *Conditional Storing*, the SRM-3006 saves all the results

containing a threshold violation as data sets; in this example, up to 200 results are saved. They can then be recalled using the *Data Viewer* softkey. The first data set

saved is shown with the index 167.1 (right).



## Time Controlled Storing

This is primarily intended for long-term monitoring in order to determine the exposure level at the time of maximum traffic or over the course of a day, for example, or to detect sporadic signals. The start time, duration, and storing interval can all be set using the *Time Controlled Storing* menu.

Start time:

- Immediately on pressing a key, or
- Programmed by entering the date and time.

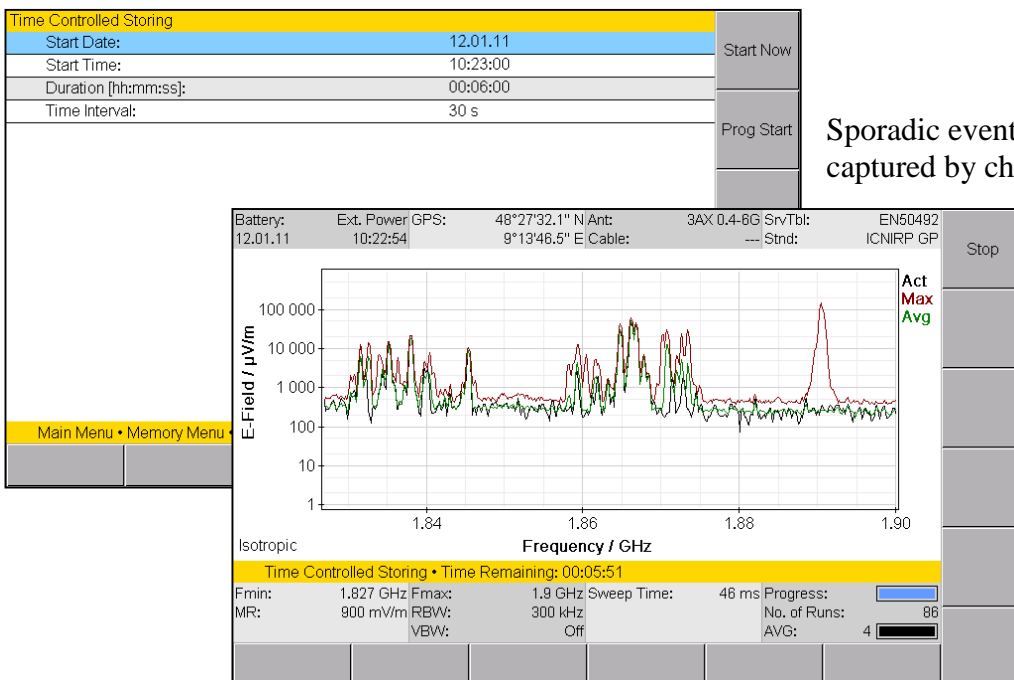
Duration of recording:

- According to the time entered up to a maximum of 99 h 59 m 59 s.
- Unlimited; if 00:00:00 is entered, the SRM-3006 keeps on saving data until the measured value memory is full.

Storage interval:

- As often as possible (i.e. until the measured value memory is full) or
- According to the time entered up to a maximum of 60 m.

Example: Measurement of the GSM1800 band every 30 seconds over a period of 6 minutes.



Sporadic events can also be captured by choosing Result Type Max; the example shows a brief peak at 1.9 GHz.

The results are recalled using the *Data Viewer* softkey in the same way as for *Conditional Storing*.

***Conditional Storing and Time Controlled Storing can be used in all operating modes except Scope. In each case, the settings only apply to the operating mode in which they were made.***