

# Installation of new probes into EMR-200/-300

You have bought a new probe or you connect a different probe to your EMR-200/-300 and you have received the following message:



Then you have to run the EMR-Conf software which was delivered with the EMR-200/-300 or Probe!

To run a new probe on the EMR-200/-300, the EMR-200/-300 needs the following information:

- A. Type of Probe (i.e. probe type 8)
- B. Basic physical parameters of this probe (stored in the software EMR-CONF)
- C. Release/version of the Probe (i.e. probe type 8.1, 8.2, ...)
- D. Individual Relative Sensitivity (R.S.-factor) of this probe (i.e. R.S. = 1.000)

A, C and D you will find on the sticker of the probe. B is stored in the software EMR-CONF in a file called probe.dat. This file sometimes has to be updated, so if you need a new version, please have a look at our homepage at the section Products/Software/Download. There you will find the complete EMR-CONF software including the file probe.dat.

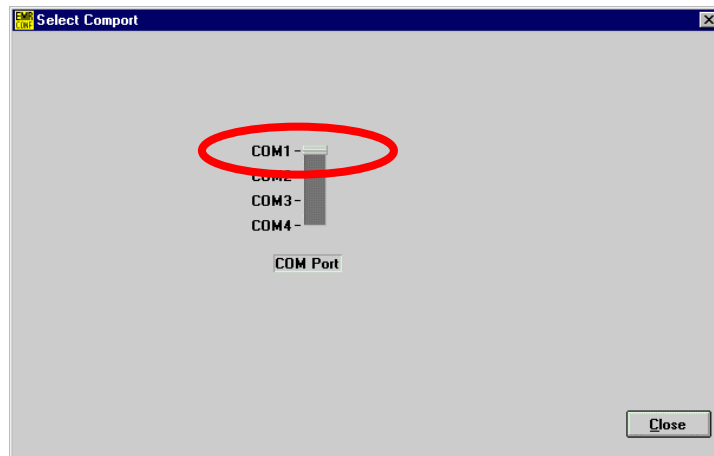
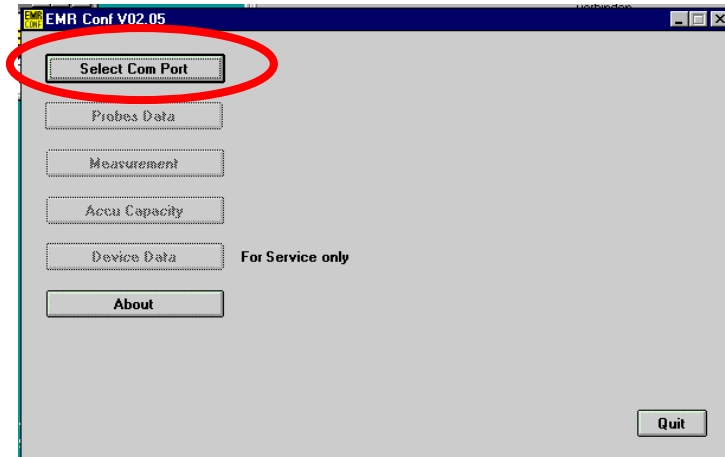
After you have installed the software or you made the update of the software just by overwriting the probe.dat please follow the procedure:

1. Switch on the EMR-200/-300
2. Connect the new probe (You will receive the error message noCA)  
**Warning!** When using a probe type 14 or higher, please check the serial number of your EMR-200/-300!
  - a) EMR-200/-300 with serial numbers A, B, C cannot be configured with a probe type 14 or higher.
  - b) EMR-200/-300 with serial numbers D to O are able to read probe type 14 or higher after an upgrade (→ Please contact our service team at support@narda-sts.de)
  - c) EMR-200/-300 with all other serial numbers (i.e. ...X, Y, Z, AA, AB, ...) are able to read probe type 14 or higher
3. Make the connection between EMR-200/-300 and PC by the optical transfer kit
4. Start the software EMR-CONF

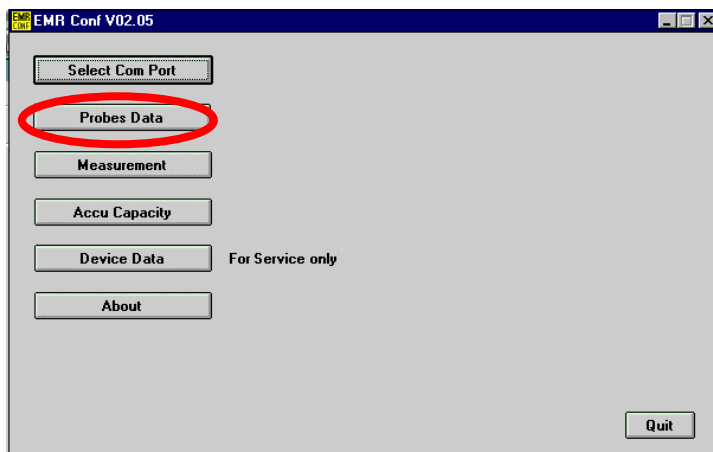


EMR Conf

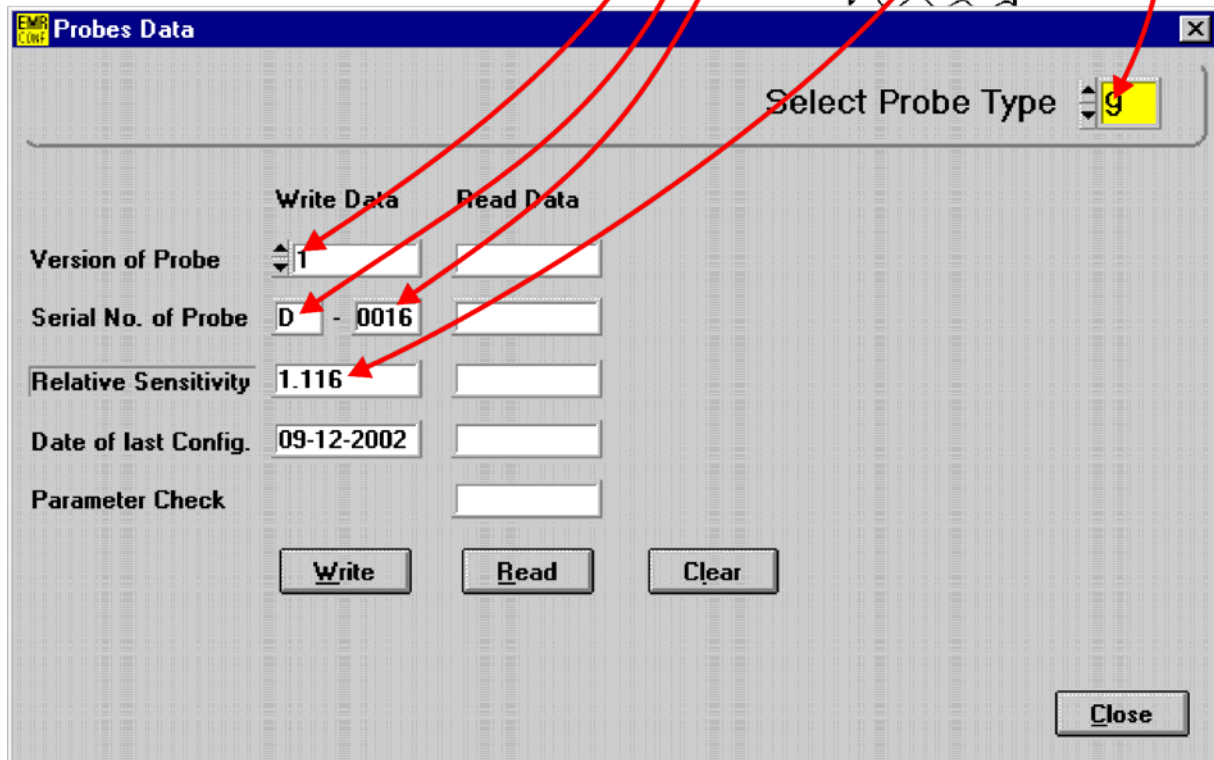
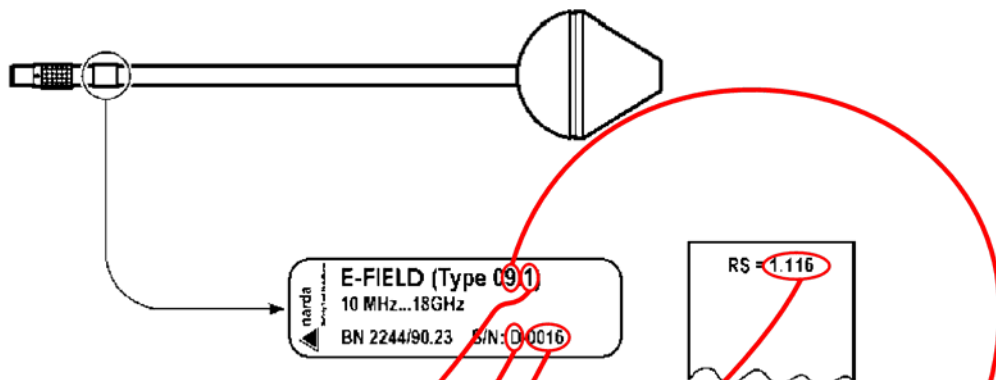
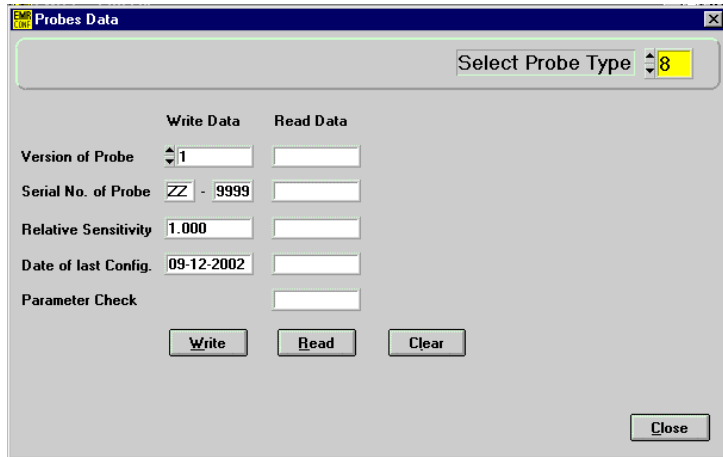
5. Select the communication port  
**Warning!** Sometimes the comports are used by other programs. This is a problem of the operating system.



E.g. COM1



Select "Probes Data"



Take over the results from the label of the probe and click on the "Write" button

	Write Data	Read Data
Version of Probe	1	1
Serial No. of Probe	D - 0016	D-0016
Relative Sensitivity	1.116	1.116
Date of last Config.	09-12-2002	09-12-2002
Parameter Check		OK

Buttons: Write, Read, Clear, Close

For confirmation click on "Read" and you should get the same results

Ready for measurements!