

NMR-T

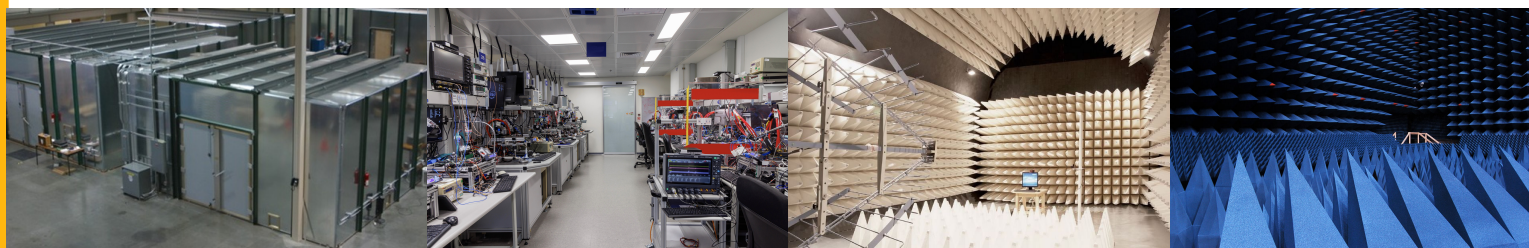
NON MAGNETIC AND NON REFLECTIVE TABLE



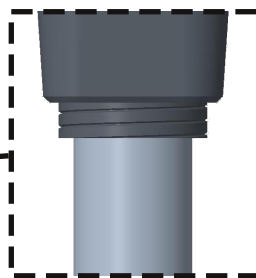
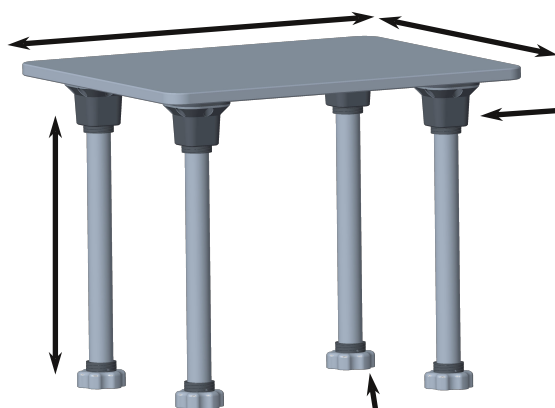
MAKE YOUR EMC TABLE
CHOOSE THE CONFIGURATION FOR YOUR APPLICATION

The NMR-T is a table built with completely non-magnetic materials. This accessories is ideal for EMI-EMC laboratory and for environment where metal is not allowed. Wheeled option for moving heavy test equipment

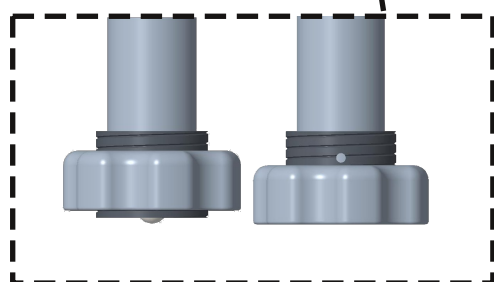
- ➔ very simple assembly
- ➔ customizable table size
- ➔ customizable legs length
- ➔ metal free
- ➔ multi-application
- ➔ removable legs
- ➔ anti-slip system
- ➔ retractable wheels
- ➔ light
- ➔ for heavy loads



Customizable legs and table size



Easy screw system with MPB thread to assemble the legs and perfectly level the table



Ball lift option for quick table movement and with non-slip pad



TECHNICAL SPECIFICATIONS

Standard dimensions table:	1 m x 80 cm x 80 cm	1 m x 80 cm x 40 cm	custom
Weight:	from 15 kg to 27 kg		
Material:	ABS, Nylon, polyethylene, glass		
Legs:	unscrewable, customizable length		
Feet:	leveling and non-slip. Option with lifting ball		
Maximum load:	50 kg (standard configuration)		
Operating temperature:	-10°C to +50°C		

Subject to change without notice